



MODEL CD6000 CHEM-DEMIL AIR HANDLING FILTER SYSTEM
SPECIFICATION

System Air Flow Rate	1200 to 6000 CFM
System Design Pressure	±24" W.G.
Temperature Range of Air Entering Filter	50°-130°F
Flow Order	Prefilter/HEPA/Charcoal/Charcoal/HEPA/Fan
Prefilter Type	Dry disposal group III-type per ARI Standard 850, Class 1 per UL Standard 900
Prefilter Bank Configuration	1 bank, 3 high × 2 wide
Prefilter Efficiency	80-85% ASHRAE Standard 52-76
HEPA Filter Type	Throw away, extended media, dry-type, bayonet-type per MIL-HDBK-144
HEPA Filter Bank Configuration	2 banks, 3 high × 2 wide
HEPA Filter Efficiency	99.97% on 0.3 micron particles
Charcoal Adsorber Cell Type	Type II per IES Standard CS-8
Charcoal Adsorber Bank	2 banks, 9 cells high × 2 wide
Charcoal Adsorber Bank Air-to-Adsorbent Residence Time	0.25 seconds @ maximum system flow rate
Total System Air-to-Adsorbent Residence Time	0.5 seconds @ maximum system flow rate
Adsorbent Type	8 × 16 mesh activated coconut shell carbon per ANSI N509 (non-impregnated)

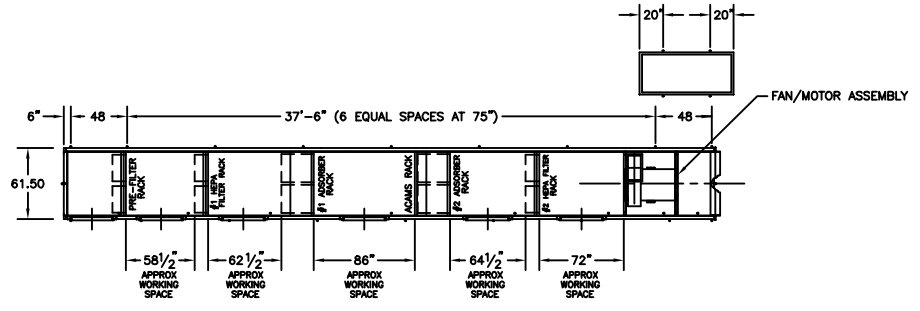
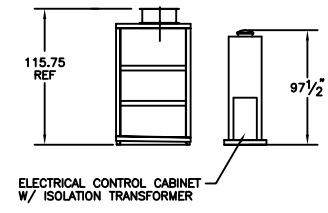
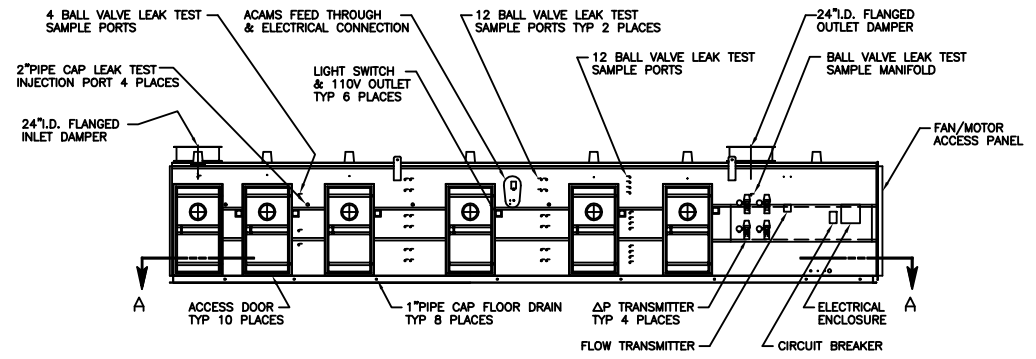
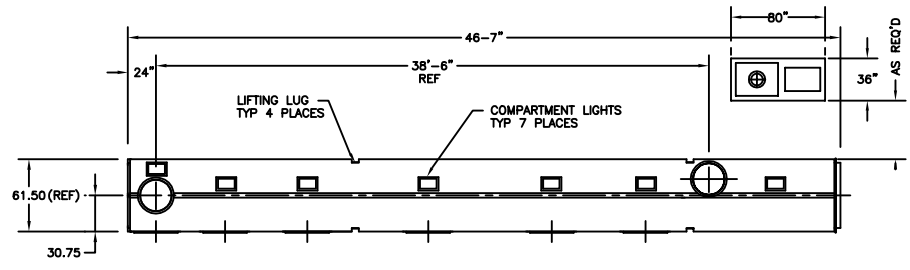
MODEL CD6000 CHEM-DEMIL AIR HANDLING FILTER SYSTEM



Inlet / Outlet Dampers	24" diameter butterfly dampers (bubble-tight) with pneumatic actuator
Instrumentation	Differential pressure indicator / transmitters across prefilter and HEPA banks as well as across entire filter system, 4-20 mA Flow indicator / transmitter, 4-20 mA Mid-bed agent monitoring array, Teflon, heat-traced
Maximum Housing Leakage Rate	0.1 SCFM/sq. ft. of housing surface at 10" W.G.
System Design Standard	ANSI N509-1989
Housing Materials of Construction	Stainless Steel, type 304L
Fan Type	Centrifugal single width, single inlet, arrangement 8, air foil wheel
Motor Type	50 Hp, totally enclosed, fan-cooled, 1800 RPM
Motor Speed Control	Variable frequency drive with isolation transformer
Utility Requirements	480 VAC, 3 phase, 60 Hz for lighting, 90 psig plant air for damper actuators and in-place test usage

MODEL CD6000 CHEM-DEMIL AIR HANDLING FILTER SYSTEM

REVISIONS			
NO.	DESCRIPTION	DATE	APPROVED



SECTION A-A

PART OR DESCRIPTION NO.		HOMOLOGATION OR DESCRIPTION		UNITAL SPECIFICATION OR VERSION	
PARTS LIST					
UNLESS OTHERWISE SPECIFIED DIMENSIONS ARE IN INCHES DECIMAL EQUIV. FRACTIONS AND TOLERANCES ARE:		CONTRACT NO.		IONEX Research Corporation P.O. Box 602, Broomfield, CO 80002	
±	.X ±	ANGLES	APPROVALS	DATE	MODEL CD6000 CHEM-DEMIL AHFU
	.XX ±		DRAWN	2/8/00	
	.XXX ±		CHECKED		
APPROVED		ISSUED		PRODUCTION ORDER NO.	REV. NO. 7039
DO NOT SCALE DRAWING		SCALE NONE		SHEET 1 OF 1	